



BI-MONTHLY PUBLICATION OF CSS GROUP

JULY - AUGUST 2025

# LIGHTHOUSE

**CSS KSA: POWERING  
SAUDI ARABIA'S  
LOGISTICS VISION WITH  
GLOBAL EXPERTISE**

**ABU DHABI'S FREIGHT  
FORWARDING EVOLUTION:  
DRIVING THE FUTURE  
OF LOGISTICS**

**TURKEY'S STRATEGIC  
EDGE IN GLOBAL  
LOGISTICS: 2025  
MID-YEAR INSIGHTS**

**CSS ELOGIX: ACCELERATING  
E-COMMERCE EXPANSION  
IN THE GCC**



# CONTENTS

Chairman's Message	3
CSS KSA: Powering Saudi Arabia's Logistics Vision With Global Expertise	4
Abu Dhabi's Freight Forwarding Evolution: Driving The Future Of Logistics	8
CSS eLogix: Accelerating E-Commerce Expansion In The GCC	9
Turkey's Strategic Edge In Global Logistics: 2025 Mid-Year Insights	13
CSS Group's Overnight Operation Moves 45-Foot Boat With Surgical Precision	15
Navigating The Future: Momentum Builds Up In India's Logistics Sector	17
CMA CGM And Nike Launch Vietnam's First Fully Electric River Barge	20
CSS At The 7th Neptune Annual Partnership Meeting In Istanbul	22
Employees Of The Month	25
Top Management - CSS Group	26



Scan for website

---

Lighthouse is produced by the CSS Group's Corporate Communications & Marketing Department  
For enquiries and suggestions, email: [marketing@cssdubai.com](mailto:marketing@cssdubai.com). Download Lighthouse online at [www.cssgroupsite.com](http://www.cssgroupsite.com)

---

FOR PRIVATE CIRCULATION ONLY

*The opinions and views contained in this magazine are not necessarily those of the publisher. Lighthouse cannot accept any liability for the inclusions or omissions, news and views expressed in this magazine. Readers are advised to seek expert opinion before acting on any information contained here.*

---



# Chairman's Message

## **Building Smarter Networks for a Connected Tomorrow**

In today's supply chain landscape, logistics is no longer a back-end function. It is a strategic force driving national competitiveness, regional collaboration, and technological innovation. What we move, how we move it, and the ecosystems we build around that movement are now at the center of how economies grow and how industries evolve.

## **Regional Connectivity Is the New Currency**

One of the most defining developments we have seen over the past few months, was the strategic partnership between Saudia Cargo and China Cargo Airlines, enhancing freight frequency between Riyadh and Shanghai. This is more than a bilateral agreement, it is a signal that Asia–Gulf–Europe corridors are becoming the new growth arteries of global trade. As the demand for quicker, more reliable cargo movement intensifies, airlines and logistics providers that can deliver on speed and scale will shape the future.

At the same time, Qatar's emergence as a regional logistics powerhouse—leveraging Hamad Port and Hamad International Airport—highlights a growing trend on future forward countries are investing in integrated logistics ecosystems. These are not isolated infrastructure projects; they are strategically designed hubs that connect sea, air, road, and rail with digital systems and real-time visibility.

The potential integration of Etihad Rail with Kuwait's transport networks is a promising step toward cross-border freight mobility. Regional connectivity is an imperative in driving growth and prosperity.

## **E-commerce Is Redefining Operations**

The e-commerce boom continues to push boundaries. In the UAE, Amazon's use of dark stores—warehouses designed purely for rapid online fulfilment—is a telling example of how logistics must adapt to the new definition of 'convenience.' It's no longer about just delivering fast; it's about anticipating demand, placing inventory closer to consumption points, and enabling flexible last-mile solutions.

With smarter, automated and AI-enabled warehousing, the transformation of Saudi logistics is remarkable. The Kingdom is building not just capacity, but capability—making its logistics sector more agile, data-driven, and future-ready.

## **Technology As a Differentiator**

At CSS, we've always believed that the next frontier of logistics lies at the intersection of infrastructure and intelligence.

New developments like the automatic EV charging station in the US aimed specifically at logistics vehicles and the electrification of fleets reaffirm this belief. Autonomous infrastructure will redefine distribution models in the coming decade. From lowering operational costs to reducing downtime, innovations like these are turning ESG ambitions into everyday business advantages.

## **The Way Forward**

What do these developments mean for us at CSS and for our peers across the logistics value chain?

First, we must build for resilience, not just efficiency. Whether it's through regional partnerships, smart warehousing, or multimodal integration, we need to create supply chains that bend but don't break.

Second, we must lead with foresight. The companies that thrive will be those that invest in long-term infrastructure while adapting to short-term demand shifts.

Finally, we must put people and partnerships at the center. Technology may power logistics, but it's trust that fuels it. Trust in processes, in people, and in the promise to deliver.

As we step into the second half of 2025, let us move forward not just with speed—but with purpose. Let us remain learners, collaborators, and custodians of an industry that quietly powers the world.

## ► **T. S. Kaladharan**

Founder & Chairman, CSS Group

# CSS KSA: POWERING SAUDI ARABIA'S LOGISTICS VISION WITH GLOBAL EXPERTISE

As Saudi Arabia accelerates its transformation under Vision 2030, logistics is emerging as one of the nation's most strategically important sectors. With the government aiming to position the Kingdom as a global logistics hub connecting Asia, Africa, and Europe, investments in infrastructure, technology, and trade facilitation are reaching historic highs. CSS KSA, a part of the CSS Group, plays a pivotal role in shaping the logistics narrative within the Kingdom.

With well-established operations across Riyadh, Dammam, and Jeddah, CSS KSA is enabling seamless and scalable logistics solutions for regional and global trade. From bonded trucking facilities to specialized project logistics, the CSS team in Saudi Arabia supports not only economic growth but also helps drive the country's global trade ambitions.

Chairman of CSS Group, Mr. T.S. Kaladharan, reflects on this evolution, noting that "Saudi Arabia has always held strategic importance for CSS. Our presence in the Kingdom reflects both our commitment to the region and our belief in its incredible potential. The team at CSS KSA is doing remarkable work. As they expand bonded services and warehousing solutions, I am confident we are only at the beginning of a powerful growth story."

## STRATEGICALLY POSITIONED, EXPERTLY DELIVERED

CSS KSA has strategically established its operations in three of the Kingdom's key commercial and logistics corridors—Riyadh, Dammam, and Jeddah. Each location is equipped with tailored infrastructure and a team of highly skilled professionals, ensuring comprehensive, end-to-end logistics support for a wide range of industries.

CSS KSA provides Non-Vessel Operating Common Carrier (NVOCC) services with a global reach and localized efficiency. The team manages comprehensive ocean freight solutions, covering full-container load (FCL), less-than-container load (LCL), and breakbulk shipments. They also specialize in air freight and charter management, handling urgent and time-sensitive cargo with precision and expertise.

Land transportation is another cornerstone of their offerings, ensuring safe, efficient, and timely overland cargo movement across domestic and international routes. Additionally, CSS KSA excels in project logistics, coordinating complex and large-scale cargo operations with meticulous planning and execution.



Multimodal operations, including sea/air and sea/land services, are strategically designed to optimize transit time and cost. The company also offers both third-party (3PL) and fourth-party logistics (4PL) services, taking complete control of supply chain management for businesses seeking streamlined operations.

Heavy equipment logistics is handled with care and expertise, including the movement of oversized, high-value machinery. CSS KSA also caters to the automotive sector with specialized auto logistics solutions. Their capabilities extend to yacht and marine logistics, managing high-end marine cargo with the attention it demands.

Further, the team offers industrial packing, lashing, and crating services that meet international shipping standards. They support hospitality and hotel projects with tailored logistics planning and also manage end-to-end logistics for exhibitions and events throughout the Kingdom.

What sets CSS KSA apart is its ability to integrate these services under one roof, offering clients the convenience of a single-point solution backed by global reach and local expertise.



## NEW MILESTONES ON THE HORIZON

In a significant step towards strengthening its logistics infrastructure in the Kingdom, CSS KSA is preparing to launch a bonded trucking facility between Dammam and Jeddah—a move expected to enhance speed, security, and efficiency in cargo transfers across regions. This initiative will play a key role in facilitating the movement of import and export cargo within bonded status, thereby saving time and reducing customs complexities.

Complementing this, CSS is also preparing to open bonded warehouses in Riyadh, Dammam, and Jeddah, reinforcing its commitment to enabling cost-effective and compliant logistics services across KSA's key economic centers. "Our Import Direct Consolidation (Direct Consol) to KSA service has been a game-changer," says Anas Nizarudeen, Business Development, CSS KSA. "By offering direct LCL consolidation services into the Kingdom, we've reduced lead times and improved reliability for clients across verticals—from retail and FMCG to automotive and industrial projects."

Anas further emphasizes the company's alignment with national priorities, adding, "The CSS KSA journey is deeply aligned with the Kingdom's vision for the future. Our expansion plans, including bonded warehousing and trucking, are designed to empower trade, simplify logistics, and deliver measurable value to our clients."



## NAVIGATING COMPLEXITY WITH CONFIDENCE

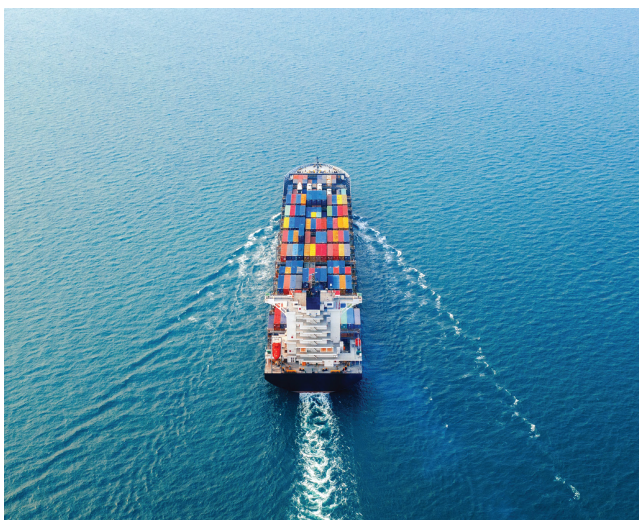
Saudi Arabia's logistics environment is marked by rapid evolution and increasing sophistication. To stay ahead, CSS KSA continues to invest in people, processes, and technology. Whether it's managing oversized project cargo or delivering door-to-door logistics for luxury hospitality brands, the CSS team consistently brings precision, flexibility, and foresight to every operation.

In logistics, it's never just about moving goods," Anasmon. "It's about anticipating variables, optimizing costs, and ensuring every delivery meets the client's expectations. That's the CSS promise."

## MULTIMODAL EXPERTISE AND PROJECT LOGISTICS

CSS KSA's strength in multimodal logistics—especially Sea-Air and Sea-Land operations—ensures optimized transit times and cost efficiencies. This flexibility is crucial in a region where cross-border regulations, time-sensitive cargo, and variations in infrastructure all influence logistics strategies.

The division has also handled several large-scale projects involving heavy equipment logistics, industrial packing, and event logistics for key clients in energy, construction, and public sector initiatives. Through integrated planning, close coordination, and the use of advanced handling techniques, CSS KSA has established itself as a trusted project logistics partner in the Kingdom.



## A VISION ANCHORED IN PEOPLE AND PERFORMANCE

Behind CSS KSA's continued growth is a dynamic team backed by the global CSS Group's values: customer satisfaction, teamwork, and continuous innovation. From frontline operations to business development and strategic leadership, the team in Saudi Arabia represents a rich mix of experience and youthful energy.

The support from CSS Group's global network—including branches across the UAE, Bahrain, Oman, Qatar, Turkey, Kenya, Sri Lanka, and India—adds strength to the company's local delivery. It also ensures that clients benefit from international best practices, digital tools, and global service assurance.



## TECHNOLOGY, TRANSPARENCY, AND TRUST

As part of CSS Group's broader digital transformation journey, CSS KSA is also integrating tools that allow for real-time shipment tracking, enhanced customer engagement, and transparent billing processes. These innovations not only reduce turnaround times but also empower clients with visibility and control over their cargo.

Additionally, upcoming AI-based platforms and paperless workflows will be rolled out across the KSA branches in line with the group-wide digital agenda—an initiative designed to increase operational agility and reduce costs by up to 30%.

## LOOKING AHEAD: GROWTH WITH PURPOSE

CSS KSA's immediate roadmap includes the launch of bonded trucking between Jeddah and Dammam, the opening of bonded warehouse facilities in Riyadh, Dammam, and Jeddah, and the expansion of the Direct Consol import program into new trade lanes. The company also plans strategic hiring to enhance specialized verticals like hospitality logistics, auto logistics, and events.

With these developments, the company is well-positioned to capitalize on the growing demand for agile and integrated logistics solutions in Saudi Arabia. "We're building more than logistics capabilities—we're building trust," concludes Anas. "Our clients know that with CSS KSA, they can expect reliability, speed, and support every step of the way."

CSS KSA's growth mirrors the transformation of the Kingdom itself: bold, forward-thinking, and intensely focused on excellence. With new infrastructure on the horizon, multimodal solutions gaining momentum, and a team fueled by purpose, CSS KSA is charting a new path for logistics in Saudi Arabia—one built on innovation, trust, and long-term vision.

As the Kingdom rises to become a global logistics powerhouse, CSS KSA will continue to play a key role in its journey, delivering value through every shipment, solution, and milestone.



# ABU DHABI'S FREIGHT FORWARDING EVOLUTION: DRIVING THE FUTURE OF LOGISTICS

The freight forwarding industry in Abu Dhabi is undergoing rapid evolution, driven by significant infrastructure investments, diversification efforts, and strategic national projects. With its position as a key logistics hub, Abu Dhabi is seeing strong demand for specialized logistics services, particularly in support of large-scale oil, gas, and renewable energy projects. The integration of Etihad Rail has further strengthened multimodal connectivity, offering sustainable alternatives to road transport and enhancing inland cargo movement.



**MIDHUN GEORGE**  
General Manager - CSS Abu Dhabi

Sustainability is becoming a central tenet of Abu Dhabi's logistics strategy. In line with the UAE's Net Zero 2050 vision, key logistics players and infrastructure providers are implementing initiatives such as solar-powered warehouses, low-emission cargo handling equipment, and LEED-certified logistics facilities. Etihad Rail itself is expected to cut greenhouse gas emissions by millions of tons annually by shifting heavy freight from road to rail. Freight forwarders are also increasingly aligning with green supply chain practices, including carbon offsetting programs and the adoption of recyclable packaging solutions.

On the technology front, Abu Dhabi is leading the region's digital logistics transformation. Maqta Gateway, the digital arm of AD Ports Group, is streamlining operations through paperless trade, blockchain-secured customs clearance, and real-time cargo visibility. Logistics companies are adopting advanced transportation and warehouse management systems, while artificial intelligence and predictive analytics are being utilized to optimize delivery routes, enhance cargo forecasting, and minimize downtime. Automation is becoming more prominent in warehousing and distribution, with pilot projects involving robotics and drones gaining traction.

From a regional perspective, Abu Dhabi is strategically positioning itself as the logistics backbone of the UAE and the wider Gulf.

Khalifa Port, now one of the world's fastest-growing ports, is directly linked to Etihad Rail and KEZAD, forming an integrated ecosystem that is ideal for international manufacturers, distributors, and project owners. Mussafah, meanwhile, remains the industrial heartland for heavy cargo and engineering equipment logistics. The emirate is also expanding overland freight corridors with Saudi Arabia and strengthening maritime links with East Africa and the Indian Subcontinent, enhancing its role in regional re-export and transshipment trade.

In summary, Abu Dhabi's freight forwarding industry is undergoing a phase of strategic transformation. It is embracing sustainability, driving digital innovation, and leveraging regional integration to become a resilient and future-ready logistics powerhouse—supporting not only domestic economic growth but also broader connectivity across the Middle East, Asia, and Africa.





# CSS ELOGIX: ACCELERATING E-COMMERCE EXPANSION IN THE GCC

In the fast-paced world of e-commerce, where speed, accuracy, and customer experience are everything, CSS eLogix stands out as a strategic partner for brands looking to scale across the Gulf region. Based in the UAE, CSS eLogix operates a sophisticated network of fulfillment centers across key GCC cities, including Dubai, Riyadh, Jeddah, Doha, and Manama. Unlike traditional warehouses, these hubs are optimized for speed, automation, and high-volume e-commerce operations, offering seamless order processing, storage, packing, and shipping.

CSS eLogix is more than just a logistics provider—we are an enabler of business growth. Our fulfillment services help e-commerce brands unlock new markets, reduce operational costs, and enhance customer satisfaction.



## HOW CSS ELOGIX IS MAKING A MEASURABLE DIFFERENCE ACROSS THE GULF

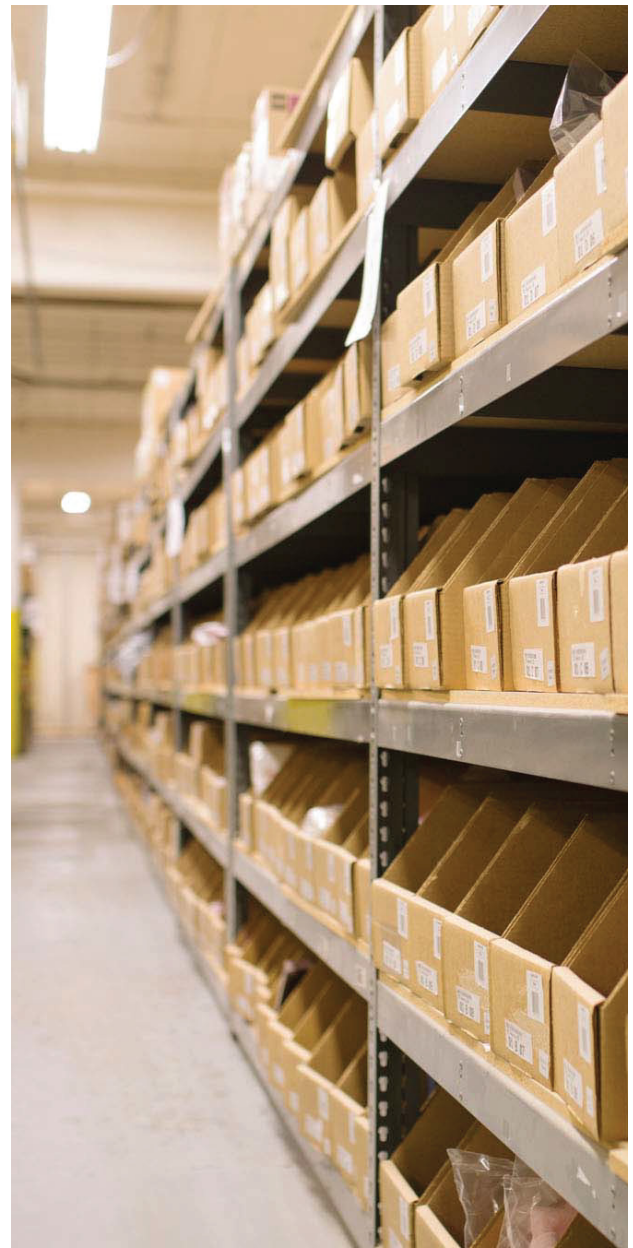
### SPEED MATTERS: DELIVERING THE EXPERIENCE CUSTOMERS EXPECT

In e-commerce, delivery speed can make or break a sale. With fulfillment centers strategically located across the GCC, CSS eLogix enables same-day or next-day delivery in most major cities. This is especially important in a region where consumers demand fast and reliable service. Faster delivery not only improves customer satisfaction but also boosts conversion rates, increases repeat purchases, and strengthens overall brand trust.



## **COST-EFFECTIVE LOGISTICS FOR ALL SIZES OF BUSINESS**

Logistics costs can be a significant challenge for online brands, particularly those seeking to expand into new markets. At CSS eLogix, we reduce those costs through bulk storage, consolidated shipping, and optimized delivery routes. Brands working with us don't need to invest in their own warehouses or last-mile fleets, resulting in significant savings. Whether a startup or a scaling enterprise, our shared infrastructure model keeps the costs predictable and scalable.



## **REAL-TIME INVENTORY ACCURACY AND VISIBILITY**

One of CSS eLogix's key strengths is our advanced Warehouse Management System (WMS). It offers our partners real-time inventory visibility. This level of control enables more accurate stock forecasting, thereby minimizing backorders. The partners can also ensure that multi-channel sales through websites or marketplaces like Noon and Amazon run smoothly. Our system supports brands in maintaining a consistent, reliable shopping experience.

## **ON-DEMAND SCALABILITY FOR PEAK SEASONS**

During high-demand periods, such as Ramadan, Black Friday, or seasonal sales, brands need to scale quickly. We offer flexible fulfillment services across the GCC, allowing partnered brands to scale their operations without the burden of building their own logistics infrastructure. Our fulfillment centers are equipped to handle sudden spikes in order volume, helping brands deliver efficiently and reliably. By providing on-demand scalability, we enable them to focus on growth, customer experience, and product development while we handle the logistics.

## EFFORTLESS MARKET ENTRY ACROSS THE GCC

Every brand looks to expand its growth by entering new markets. However, setting up local operations in each country can be expensive and time-consuming. CSS eLogix makes this process simple with our cross-border fulfillment services. With hubs in the UAE, Saudi Arabia, Bahrain, and Qatar, we enable e-commerce brands to enter new markets quickly and efficiently. Our services include Importer of Record (IOR) support and comprehensive customs clearance, eliminating the typical hurdles of international logistics. The partnered brands focus on growth and customer experience while we manage the complexities of cross-border operations, ensuring smooth and compliant entry into multiple GCC markets.

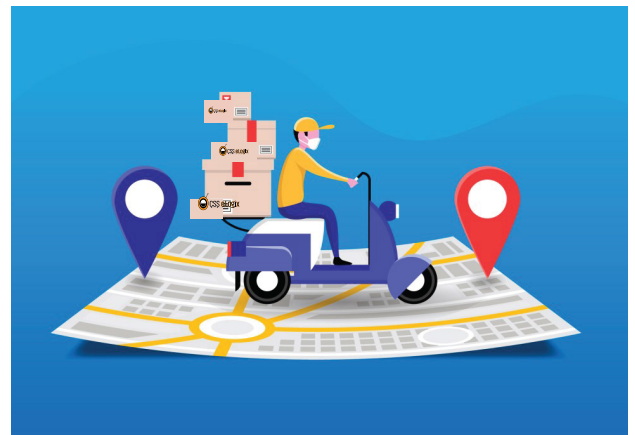


## HANDLING RETURNS WITH CARE

Returns are an inevitable part of e-commerce, but poor reverse logistics can damage a brand's reputation. It can lead to customer dissatisfaction and financial losses. At CSS eLogix, our Bahrain fulfillment center is fully equipped to manage returns with speed and care. We handle every step of the process, from inspection and quality checks to repackaging and restocking, ensuring that returned items are processed efficiently. This smooth and reliable system improves the customer experience while helping brands recover value from returned products, reduce losses, and maintain a strong market image.

## SEAMLESS LAST-MILE INTEGRATION

At CSS eLogix, we've partnered with leading last-mile delivery providers across the Gulf to offer seamless end-to-end shipping solutions. Our network offers a range of delivery options, including home deliveries, locker drop-offs, and convenient pick-up points, ensuring flexibility to meet the diverse needs of our customers. This level of convenience not only enhances the overall shopping experience but also boosts customer satisfaction and loyalty. Additionally, our system provides real-time tracking, offering customers complete visibility of their orders and enabling brands to minimize delays and delivery-related issues. By combining speed, reliability, and choice, we ensure that last-mile delivery is a strength, not a challenge.



## CUSTOMIZED, LOCALIZED PACKAGING OPTIONS

First impressions matter, especially in the Gulf, where consumers value thoughtful presentation. CSS eLogix helps brands make a lasting impact with personalized packaging services. We offer custom options, including branded boxes, Arabic inserts, thank-you cards, and seasonal themes such as Ramadan gift wraps. These thoughtful details not only create a memorable unboxing experience but also strengthen brand identity and boost customer satisfaction. By adding a personal touch to every order, we help brands stand out in a competitive e-commerce market.



## SMART INVENTORY DISTRIBUTION TO AVOID STOCKOUTS

Our smart inventory distribution system enables brands to maintain optimal stock levels across multiple hubs. This reduces stockouts and delivery delays in specific cities. This ensures that customers receive their orders quickly and without disruption. Even during peak times, fulfillment stays smooth and reliable. Brands can respond rapidly to demand and improve delivery performance. Smarter stock placement also boosts customer satisfaction and strengthens brand reliability.

## NAVIGATING GCC REGULATIONS WITH CONFIDENCE

Compliance is essential in the Gulf, where VAT laws, customs regulations, and data policies are constantly evolving. CSS eLogix provides expert support to help businesses stay compliant with the latest regulations across various markets. We understand these complexities well and offer specialist support to help brands stay up to date with changing rules in each market. From handling customs documentation to managing compliances, our team ensures smooth operations. This enables e-commerce businesses to focus on growth while we handle the regulatory challenges and minimize risks.

## A TRUSTED PARTNER IN SCALABLE, SEAMLESS E-COMMERCE GROWTH

In today's dynamic e-commerce landscape, having the right logistics partner is crucial for success, and CSS eLogix delivers just that! With fast, reliable, and scalable logistics solutions across the Gulf, we help brands enter new markets, meet rising customer expectations, and grow sustainably. From quick deliveries and innovative inventory management to personalized packaging and regulatory compliance, every solution we offer is designed to drive growth. Whether you're a regional startup or a global brand, our infrastructure allows you to deliver at the speed of Amazon or Noon without building your own logistics network.

With CSS eLogix by your side, brands can focus on what matters most—sales, marketing, and innovation. While we take care of the complexities to ensure smooth operations and seamless e-commerce growth.



# TURKEY'S STRATEGIC EDGE IN GLOBAL LOGISTICS: 2025 MID-YEAR INSIGHTS

As we cross the halfway mark of 2025, Turkey continues to strengthen its position as a key player in the global logistics landscape. With its unique geographical location bridging Europe, Asia, and the Middle East, Turkey offers a critical transit hub for multimodal logistics and freight forwarding operations.



**SEVIN BAYRI**  
Sea Freight Manager - CSS Turkiye

## A GATEWAY BETWEEN CONTINENTS

Turkey's location remains one of its most valuable assets. Strategically positioned at the crossroads of major trade corridors—namely the Trans-European Transport Network (TEN-T), the Middle Corridor (linking China to Europe via Central Asia), and the Mediterranean Basin—Turkey serves as a natural logistics gateway for east-west and north-south trade flows.

## MARKET EXPANSION TRENDS IN 2025

In 2025, Turkey's logistics market is showing strong growth in several key regions:

- **The Marmara Region**

Particularly Istanbul and Kocaeli (Korfez), remains the logistics heartland, supported by advanced infrastructure, customs zones, and port connectivity (Ambarlı, Kumport, and DP World Yarımca, Yilport).

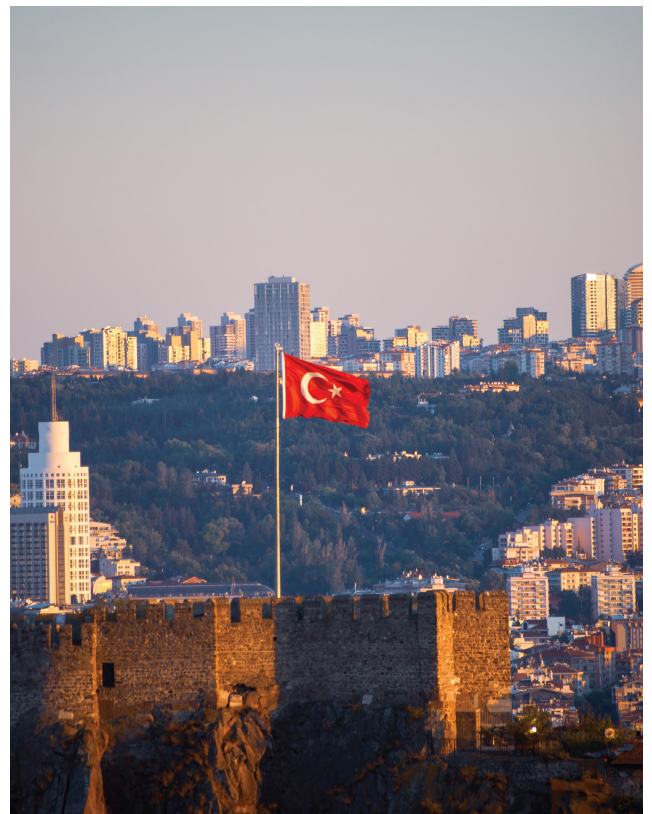
- **The Aegean Region**

Particularly around İzmir, is experiencing rapid development, driven by investments in cold chain logistics, e-commerce fulfillment centers, and intermodal terminals.

- **The Southeastern Corridor**

encompassing Iskenderun and Mersin, is expanding into a vital export hub for the Middle East, with notable growth in land transport and warehousing services. Mersin and Iskenderun ports also continue to play a crucial role in handling transit cargo traffic originating from CIS countries.

This regional diversification demonstrates that logistics demand in Turkey is no longer concentrated in traditional centers alone, but is spreading to strategic inland and coastal cities.



## CONTAINER SHIPPING PERFORMANCE: 2025 MID-YEAR OVERVIEW

The first half of 2025 saw a moderate rebound in container volumes at Turkish ports, following a volatile 2023–2024 period marked by regional tensions and global supply chain shifts. Notable developments include:

- **Increased transshipment volumes**

Particularly in Mersin and İskenderun, due to rerouted vessels avoiding the Red Sea.

- **Steady recovery in imports**

Particularly from Asia, following more stable pricing and lead times.

- **Export volumes are rising**

Driven by Turkey's strong performance in textiles, automotive spare parts, white goods manufacturing, agricultural products, food items, spare parts, and furniture.

Port operators have also invested in digitalization and terminal automation, increasing efficiency and reducing dwell times.

## MERSIN PORT EXPANSION

The first phase of the Mersin Port expansion project has been completed. The project includes increasing overall port capacity, extending the quay, and enabling the port to handle ultra-large container vessels (ULCVs) with significantly higher capacity. Once the project is completed, Mersin Port's annual container handling capacity will increase from 2.6 million TEUs to 3.6 million TEUs.

This development suggests a clear expectation of increased business volume in the near future, with projected growth in exports, imports, and transit cargo traffic.

## ADVANTAGES FOR FREIGHT FORWARDERS IN TURKEY

Operating as a freight forwarder in Turkey presents several key advantages:

- **Proximity to Emerging Markets**

Turkey offers access to over 1.5 billion consumers within a 4-hour flight radius, encompassing Europe, the CIS countries, North Africa, and the Gulf.

- **Robust Infrastructure**

Modern seaports, expanding railway lines, free zones, and international airports offer scalable multimodal solutions.

- **Transit Customs Expertise**

Freight forwarders with deep knowledge of Turkish customs regulations and bonded processes can deliver fast, compliant service—especially critical for high-value or time-sensitive cargo.

- **Agile Workforce & Entrepreneurial Ecosystem**

Local firms demonstrate a high level of adaptability, often providing more flexible, client-oriented solutions than larger multinational counterparts.

Turkey's logistics sector in 2025 remains resilient in the face of global challenges, yet it continues to evolve through strategic investments, regional diversification, and the adoption of new technologies. For freight forwarders, the opportunities are ripe. As the world shifts toward nearshoring, digital trade, and green corridors, Turkey's unique position and growing capabilities make it an increasingly essential player in the supply chain ecosystem.



# CSS GROUP'S OVERNIGHT OPERATION MOVES 45-FOOT BOAT WITH SURGICAL PRECISION

CSS Group once again proved its excellence in project logistics with the successful overnight transfer of a 45-foot boat. Transporting such a large and delicate cargo is a complex undertaking that requires specialized expertise and close coordination. The complex move, involving multiple departments and specialized equipment, showcased the company's ability to manage large-scale operations with precision, speed, and safety.



## STRATEGIC PLANNING AND OVERNIGHT EXECUTION

The operation began with swift customs clearance, a critical first step that enabled a timely launch of the transfer. Backed by in-depth procedural knowledge and strong rapport with regulatory authorities, the team ensured a smooth and delay-free clearance process.

Given the boat's size, moving it during regular hours was not feasible due to traffic and safety concerns. Also, the boat's considerable dimensions necessitated the use of escort vehicles and specialized permits. To minimize disruption, the CSS team scheduled the move for the night, complying with local transport regulations for oversized cargo.

CSS's transport team, working in tandem with regulatory bodies, carefully mapped out the path, coordinating with local authorities to guarantee uninterrupted passage. The teams also arranged for escort vehicles and secured specialized permits to ensure safe and smooth passage. Every step, from timing to traffic management, was meticulously thought out to avoid delays and ensure the vessel's safety. The team's attention to detail ensured that the 45-foot boat was transported safely!



## COLLABORATION AND TECHNICAL EXCELLENCE

The success of the transport phase was matched by the expertise shown during the offloading process. Once the vessel reached its destination, CSS orchestrated the offloading using a 70-ton crane operated by rigging specialists. The lift had to be handled with utmost precision to avoid damage to the vessel or surrounding equipment. The crane team executed the manoeuvre with remarkable accuracy, safely transferring the boat onto a waiting trailer without incident.

The choice of equipment and personnel for the task reflected CSS's deep understanding of heavy-lift logistics. Safety remained a top priority, and the operation was carried out without a hitch. It is a testament to the team's technical expertise and readiness.

What truly set this operation apart was the seamless collaboration between multiple CSS departments—customs, transportation, marine logistics, and heavy lift—all working together to ensure success. Their combined efforts minimized downtime and maximized efficiency, proving that even the most complex logistics tasks can be executed smoothly with the right team in place. Beyond the logistics, this successful move reflects the culture of excellence that defines CSS.

## LEADING WITH CONFIDENCE IN SPECIALIZED LOGISTICS

This project also highlights CSS Group's broader capabilities in handling time-sensitive, oversized, and high-value cargo. Whether it's navigating regulatory challenges, coordinating multiple moving parts, or deploying specialized machinery, the teams at CSS consistently delivers world-class logistics solutions tailored to each project's unique needs.

This latest project underscores CSS's strengths in heavy-lift transport, freight forwarding, and customs clearance, affirming its leadership in the shipping and logistics industry. It also reinforces the company's unwavering commitment to safety, technical excellence, and customer satisfaction.





# NAVIGATING THE FUTURE: MOMENTUM BUILDS UP IN INDIA'S LOGISTICS SECTOR

A transformative shift is underway in India's logistics sector. International alliances, government-backed infrastructure upgrades, and rapid digitization fuel the change. As global supply chains become more intertwined and customer expectations rise, Indian logistics providers are entering a crucial phase of evolution.



## SECTOR SNAPSHOT: RESILIENCE MEETS OPPORTUNITY

Despite a year marked by market fluctuations and investor caution, India's logistics sector is regaining momentum. Strategic moves—such as the recently signed bilateral agreement with Japan—signal a renewed commitment to improving efficiency, reducing costs, and attracting foreign direct investment into logistics infrastructure. With upside potential projected as high as 47% for select stocks and robust performance indicators from leading logistics firms, the sector is positioning itself as a key driver of India's economic future. This article examines the current performance, near-term outlook, and top-performing companies poised to capitalize on the sector's upward trajectory.

## MIXED SIGNALS, PROMISING FUTURE

India's logistics sector is at an interesting juncture—recovering from recent setbacks while charting a more optimistic course for the future. Sector performance has seen a noticeable uptick in the past month, hinting at a rebound after a challenging year that tested investor confidence.

One of the most significant catalysts on the horizon is a newly signed bilateral logistics agreement between India and Japan. This partnership is expected to streamline supply chains, reduce operational costs, and expedite delivery times, thereby strengthening trade ties between the two nations. The agreement is also poised to unlock foreign direct investment (FDI) into India's logistics infrastructure—an encouraging signal for long-term transformation. Analysts project a potential upside of up to 47% for leading logistics stocks, underscoring the sector's growth potential. With the adoption of technology, global partnerships, and evolving supply chain models, companies that can remain agile and innovation-ready are likely to emerge as winners.



## COMPANIES TO WATCH

Analysts have identified six companies with strong fundamentals and promising upside potential. Here's a look at the front-runners reshaping the logistics space:

Company	Current Price (INR)	Analyst Rating	Upside Potential	Target Price (INR)
Gateway Distriparks	₹63.86	Buy	47%	₹93.30
VRL Logistics	₹582.00	Strong Buy	18%	₹646.00
TCI Express	₹764.90	Buy	18%	₹882.00
Delhivery	₹356.35	Buy	16%	₹405.00
Transport Corporation of India	₹1,152.40	Strong Buy	13%	₹1,280.00
Container Corporation of India	₹731.15	Hold	9%	₹795.00

## WHAT MAKES THESE PLAYERS STAND OUT

### • Gateway Distriparks: Gaining Ground with Intermodal Efficiency

Gateway Distriparks is building strength as a major player in intermodal logistics, operating inland container depots and freight stations. With a sharp focus on EXIM (export-import) connectivity, the company has carved out a strong position in India's logistics grid.

Backed by a 47% upside potential, the company's robust performance includes a staggering 619.61% YoY PAT growth and an 8.11% increase in sales, signaling operational agility and effective execution.

### • VRL Logistics: Driving National Connectivity

A household name in goods transportation, VRL Logistics has a powerful nationwide fleet and specializes in LTL (Less Than Truckload) movement. Its wide service offering includes parcel delivery and complete truckload solutions, making it an essential part of India's cargo ecosystem.

Analysts have given VRL a 'Strong Buy' rating, driven by 244.71% YoY PAT growth and 9.43% sales growth. With an 18% upside potential, the company is clearly on a strong growth path.

### • TCI Express: Delivering Speed and Precision

Focusing on time-definite deliveries, TCI Express is known for its express cargo services by road and air. The brand has earned customer trust for its pan-India reach and quick turnaround solutions.

Despite a 40.39% dip in PAT, the company maintains a 'Buy' recommendation, supported by a modest 1.03% sales growth and long-term prospects for profitability through strategic recalibration.

### • Delhivery: Powering the Digital Supply Chain

One of the newer faces in the sector, Delhivery has quickly established itself as a tech-first logistics powerhouse. Catering mainly to e-commerce and enterprise supply chains, its fully integrated network offers end-to-end solutions.

With a 16% upside, Delhivery's numbers are promising—205.97% YoY PAT growth and 9.71% sales growth—showing that the company is bouncing back with renewed momentum.

- **Transport Corporation of India:  
A Multimodal Veteran**

TCI continues to lead with its multimodal logistics model, blending road, rail, and warehousing services. Its broad-based supply chain capabilities allow it to support a range of industries with tailored logistics solutions.

A 'Strong Buy' rating from analysts reflects TCI's stable positioning, with an 11.85% growth in PAT and an 11.62% increase in sales. The company's clear strategic vision makes it a solid long-term bet.

- **Container Corporation of India (CONCOR):  
A National Backbone**

As a key government-backed entity, CONCOR plays a pivotal role in India's containerized transport and warehousing infrastructure. It operates across both EXIM and domestic sectors, although recent headwinds have impacted growth. Currently rated a 'Hold', CONCOR's 5.81% PAT decline and 2.7% sales growth suggest the need for operational tweaks. However, with a 9% projected upside, it remains a stock to watch as it recalibrates its strategy.



## SHIFTING GEARS TOWARDS GROWTH

India's logistics sector is no longer just a cost center; it's fast becoming a growth engine. With supportive government policies, increasing foreign direct investment (FDI), and the adoption of new technologies, the ecosystem is transforming rapidly.

As international partnerships mature and domestic demand strengthens, logistics providers that invest in digital infrastructure, customer service, and sustainability will shape the future of the sector.

For CSS, staying informed about these market dynamics offers a unique vantage point to anticipate shifts, identify new opportunities, and build resilient, future-ready supply chains.

# CMA CGM AND NIKE LAUNCH VIETNAM'S FIRST FULLY ELECTRIC RIVER BARGE

CMA CGM has announced the launch of Vietnam's first 100% electric container barge, developed in collaboration with global brand NIKE. The project marks a significant step forward in sustainable transportation and reflects CMA CGM's broader commitment to achieving net-zero carbon emissions.

The electric barge will operate along a 180 km route between Binh Duong Province and Bà Rịa-Vũng Tàu in southern Vietnam. By replacing traditional fuel-powered vessels, this initiative is expected to reduce CO<sub>2</sub> emissions by approximately 778 tonnes per year.



## SOLAR-POWERED, FULLY INTEGRATED

Powering this innovation is a new solar-powered charging station built at the Gemalink terminal in Cai Mep Port, the country's key container gateway. The solar farm is expected to generate up to one gigawatt-hour (GWh) of renewable energy annually, allowing the barge to operate entirely on clean electricity.

To manage the project, CMA CGM has entered into a joint venture with Gemadept, a prominent logistics and port operator in Vietnam. The new entity, Green River Transportation, will oversee river transport services in the Mekong Delta, enabling scalable deployment of this zero-emission model.

## TAILORED SOLUTIONS FOR GREENER SUPPLY CHAINS

“For NIKE, this is more than a logistics solution—it’s a tailored, emissions-free supply chain strategy that combines innovation, renewable energy, and efficient transport,” CMA CGM stated in its official release. The electric barge is scheduled to enter commercial service in early 2026.

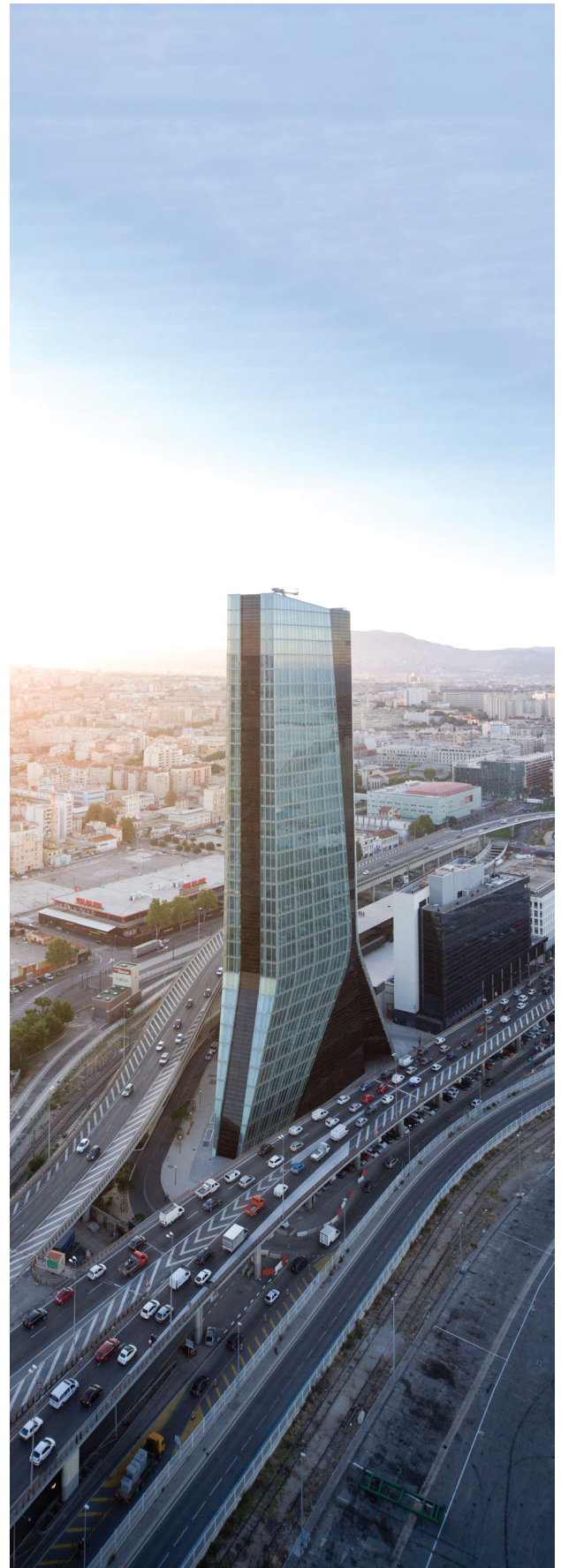
The success of this project demonstrates the viability of clean energy integration in inland shipping—one of the most underutilized modes of freight transport. With the proper infrastructure, electric barges could soon be adopted more widely in regions with extensive river networks across Asia, Europe, and beyond.

## PAVING THE WAY FOR A GREENER FUTURE

This project is more than a milestone—it signals the future of logistics. With global supply chains under pressure to become greener and more efficient, fully electric inland waterway solutions like this one provide a scalable and sustainable path forward. As environmental regulations tighten and customer expectations evolve, such innovations are likely to become a standard in the next generation of logistics.

## ABOUT CMA CGM

Headquartered in Marseille, France, CMA CGM is a leading global shipping and logistics company. With a fleet of over 620 vessels serving more than 420 ports worldwide, the Group provides comprehensive end-to-end supply chain solutions that span ocean, inland, air, and logistics services. Operating in 160 countries, CMA CGM is committed to sustainable growth and aims to achieve net zero carbon emissions by 2050.



## CSS AT THE 7TH NEPTUNE ANNUAL PARTNERSHIP MEETING IN ISTANBUL

Mr. Shubham Lalwani, Manager – Key Information Desk, represented CSS Group at the 7th Neptune Annual Partnership Meeting, held from June 10 to 13, 2025, at Swissôtel the Bosphorus in Istanbul. This prestigious event brought together over 400 sea freight consolidators and LCL forwarders from more than 60 countries, creating a powerful forum for knowledge exchange, relationship building, and strategic alignment.

Neptune Cargo Network is the world's first and biggest global NVOCC and LCL cargo alliance. The network connects sea freight professionals specializing in consolidation, with over 340 consolidators and LCL forwarders from 70+ countries. It remains the only non-exclusive platform dedicated entirely to LCL operations. For CSS, joining such a specialized and expansive network is a strategic move toward enhancing global connectivity and strengthening our consolidation services.

 *Neptune*  
The Global NVOCC and LCL Cargo Network

**NEPTUNE CARGO NETWORK**  
**7<sup>TH</sup> ANNUAL**  
**PARTNERSHIP**  
**MEETING**

JUNE 10- 13, 2025

SWISSÔTEL THE BOSPHORUS, ISTANBUL

[www.neptunecargonetwork.com](http://www.neptunecargonetwork.com)

## STRENGTHENING GLOBAL TIES THROUGH FACE-TO-FACE COLLABORATION

The four-day Neptune Annual Partnership Meeting in Istanbul successfully blended business with cultural exchange, creating an ideal setting for meaningful engagement. The event opened with a pre-conference golf game at Kemer Golf & Country Club, followed by a vibrant welcome cocktail where members donned national jerseys and exchanged bottles representing their home countries—a symbolic start to global collaboration.

Conference Day featured a dynamic plenary session that included key network updates, partner recognitions, and a panel discussion focused on LCL growth. An open mic session gave members a chance to share ideas and insights, reinforcing Neptune's inclusive and collaborative approach. The next day was dedicated to focused one-on-one meetings, allowing members to explore new partnerships and strengthen existing ones. A highlight of the event was the scenic all-white sunset cruise along the Bosphorus, offering a relaxed and picturesque setting for informal networking.

The final day wrapped up with closing meetings and reflections, bringing the conference to a purposeful close. Designed to foster genuine connections and lasting relationships, the Istanbul meeting embodied Neptune's core values of trust, partnership, and global community.

During this event, CSS further strengthened its global presence and explored fresh avenues for cooperation in the ever-expanding LCL sector. The event also provided valuable insights into industry trends, challenges, and opportunities, especially in emerging markets. From improving shipment visibility to enhancing regional consolidation strategies, every discussion helped shape a more agile and responsive logistics framework for the future. Furthermore, these in-person interactions remain invaluable in today's increasingly digital business environment, helping build the kind of trust and understanding that no virtual platform can replicate.



## KUALA LUMPUR SET TO HOST THE NEXT WAVE OF LOGISTICS PARTNERSHIPS

Neptune's ongoing commitment to excellence is further demonstrated by the announcement of its next Annual Partnership Meeting, scheduled to take place in Kuala Lumpur. This upcoming event promises to continue the spirit of global engagement, offering members like CSS a new platform to connect, share, and scale operations in the region.

In conclusion, the 7th Neptune Annual Partnership Meeting was more than just a networking event—it was a powerful platform for CSS to grow its influence, expand its partnerships, and enhance its expertise in sea freight consolidation. As we look forward to reconnecting with the global network in Kuala Lumpur, CSS remains committed to building a logistics ecosystem rooted in trust, collaboration, and long-term value creation.





# Employees Of The Month

February 2025



**Sanjay Chandran**  
Messenger - Documentation

*Sanjay displays a consistently positive work ethic and dedication to exceeding job expectations. He willingly takes on additional responsibilities and consistently delivers high-quality work with minimal errors. His perfect attendance and punctuality are commendable.*

March 2025



**Prasanth Chandran**  
Coordinator - SCM Operations

*Prasanth has consistently performed well over the past several months. He handles documentation tasks with accuracy and dedication, often working late into the night to ensure everything is completed on time. His commitment and reliability make him a valuable team member.*

April 2025



**Ameer Hussain**  
Labourer - CFS

*He is highly proactive and performs his duties effectively. He manages day-to-day tasks efficiently and maintains a perfect attendance record with no unnecessary leaves. His performance is excellent, and he consistently upholds discipline in the workplace.*



**Varsha Jacob**  
Coordinator - Operations

*Mrs. Varsha Jacob is being nominated as the Best Employee in recognition of her dedication and hard work for the company. She truly deserves to be honored for her honesty, sense of responsibility, and her willingness to work and learn at any time.*



**Ahamed Munas Khan**  
Export & Import Operation

*Nominated for outstanding performance during an 8 SOC container job from Dubai to Turkey via Jeddah. Despite the complexity and risks, he worked tirelessly with the team day and night, especially during the Ramadan, which is the challenging time to work in KSA.*

## TOP MANAGEMENT - CSS GROUP

### TS Kaladharan

Chairman

### Chandrakala (CK)

Chief Operating Officer – NVOCC & Operations

### Krishna Kaladharan

Managing Director – CSS Saudi Arabia, CSS Bahrain

### Arjun Bose

Managing Director – CSS Abu Dhabi, Qatar, Oman & Northern Emirates

### Dr. Britto Satheesh

Managing Director – CSS eLogix, CSS Global Forwarding India

### Roshmon Manoli

Vice President – Freight Forwarding

### Rakesh Menon

Director – Global Sales

### Renjith Pillai

Vice President – Projects

### Santanu Datta

Vice President – Ocean, Pricing & Product Development – MEA

### Richard Varghese

General Manager – Sales

### Fida Asghar

General Manager – NVOCC Sales

### Susanth Shekar

General Manager – HR & Administration

### Sundhar Srinivas

Finance Manager

### SAUDI ARABIA

#### Krishna Kaladharan

Managing Director

### ABU DHABI

#### Midhun George

General Manager

### KUWAIT

#### Dean Landers

Vice President

### QATAR

#### Amith Radhakrishnan

Branch Manager

### OMAN

#### Vishnu Nazir

Branch Manager

### BAHRAIN

#### Krishna Kaladharan

Managing Director

### KENYA

#### Dean Landers

Vice President

### INDIA

#### Rahat Talreja

Vice President – India Operations

#### Rajeev Kumar

Sr General Manager  
CSS North India

#### T K Viswanath

General Manager,  
South India

### CSS ELOGIX

#### Sasikala (SK)

Chief Operating Officer – CSS eLogix

### NORTHERN EMIRATES

#### Thomas Mathew

Senior General Manager

## CONTACTS

### MIDDLE EAST

#### CSS Group – Regional Headquarters

Contact Number: +971 26431717, Email: info@cssabudhabi.com

#### Consolidated Shipping Services L.L.C. Abu Dhabi

Contact Number: +971 26431717, Email: info@cssabudhabi.com

#### Consolidated Shipping Services

Contact Number: +971 48831303, Email: info@cssdubai.com

#### Dubai International Airport Cargo Gateway (Dubai Cargo Village)

Contact Number: +971 42828747, Email: info@cssdubai.com

#### CSS Kingston Logistics Sharjah Free Zone

Contact Number: +971 65575111, Email: info@csskingston.com

#### CSS Kingston Logistics Hamriyah Free Zone

Contact Number: +971 65509944, Email: info@csskingston.com

#### CSS Kingston Logistics RAK

Contact Number: +971 72264999, Email: info@rak.csskingston.com

#### CSS eLogix L.L.C. Dubai, UAE

Contact Number: +971 43217703, Email: info@csselogix.com

#### CSS eLogix Bahrain W.L.L

Contact Number: +973 3899 3030, Email: info@csselogix.com

#### CSS eLogix Qatar

Contact Number: +974 4 4111318, Email: info@csselogix.com

#### CSS eLogix – Saudi Arabia

Contact Number: +966 56 522 0083, Email: info@csselogix.com

#### Console Shipping Services W.L.L. Bahrain

Contact Number: +973 17001238, Email: info@cssbahrain.net

#### Console Shipping Services W.L.L. Qatar

Contact Number: +974 4 4111318, Email: info@cssqatar.com

#### Consolidated Shipping And Trade Services L.L.C. Oman

Contact Number: +968 24566094, Email: info@cssmuscat.com

#### Consolidated Shipping Services Company – Saudi Arabia

##### Riyadh – KSA HQ

Contact Number: +966 118391610, Email: info@cssksa.com

##### Dammam

Contact Number: +966 118391610, Email: info@cssksa.com

##### Jeddah

Contact Number: +966 118391610, Email: info@cssksa.com

#### Consolidated Shipping & Transport Agencies – Kuwait

Contact Number: +965 96958915

Email: docs@kw.consoleshipping.com

### EUROPE & AFRICA

#### Console Shipping Services – Turkiye

Contact Number: +90 216 2512145

Email: info@tr.consoleshipping.com

#### Consolidated Console Shipping Services – Kenya

Contact Number: +254 207 65 55 65

Email: info@ke.consoleshipping.com

## ASIA

**Console Shipping Services India Pvt. Ltd. - Mumbai**

Contact Number: +91 22 35407063  
Email: mailmumbai@cssindiagroup.com

**Console Shipping Services India Pvt. Ltd. - Ludhiana**

Contact Number: +91 9501004473  
Email: docsludh@cssindiagroup.com

**Console Shipping Services India Pvt. Ltd. - Chennai**

Contact Number: +91 4425250001, 25250002  
Email Id: mailchennai@cssindiagroup.com

**Console Shipping Services India Pvt. Ltd. - Coimbatore**

Contact Number: +91 9894989744  
Email: vishwanath@cssindiagroup.com

**Console Shipping Services India Pvt. Ltd. - Tirupur**

Contact Number: +91 421 2236025  
Email: mailtirupur@cssindiagroup.com

**Console Shipping Services India Pvt. Ltd. - Delhi**

Contact Number: +91 11 40589921  
Email: maildelhi@cssindiagroup.com

**Console Shipping Services India Pvt. Ltd. - Bangalore**

Contact Number: +91 80 2314777  
Email Id: mailblr@cssindiagroup.com

**Console Shipping Services India Pvt. Ltd. - Cochin**

Contact Number: +91 484407877  
Email: mailcochin@cssindiagroup.com

**Console Shipping Services India Pvt. Ltd. - Tuticorin**

Contact Number: +91 822058444  
Email: mailtuti@cssindiagroup.com

**Consolidated Shipping Services Lanka (Pvt) Ltd**

Contact Number: +94 1 2300099  
Email: info@csslanka.com

## ASSOCIATES

**Hindustan Shipping & Clearing House - Cochin**

Contact Number: + 91 4842667693, 4842667698  
Email: latha@cssindiagroup.com

**Hindustan Shipping & Clearing House - Mumbai**

Contact Number: +91 9029567890  
Email: rajeshp@cssglobalforwarding.com

**CSS Global Forwarding - Mumbai**

Contact Number : +91 8286539871, 8928083407  
Email: info@cssglobalforwarding.com

**CSS Global Forwarding - Chennai**

Contact Number : +91 8248433484  
Email: info@cssglobalforwarding.com

**CSS Global Forwarding - Delhi**

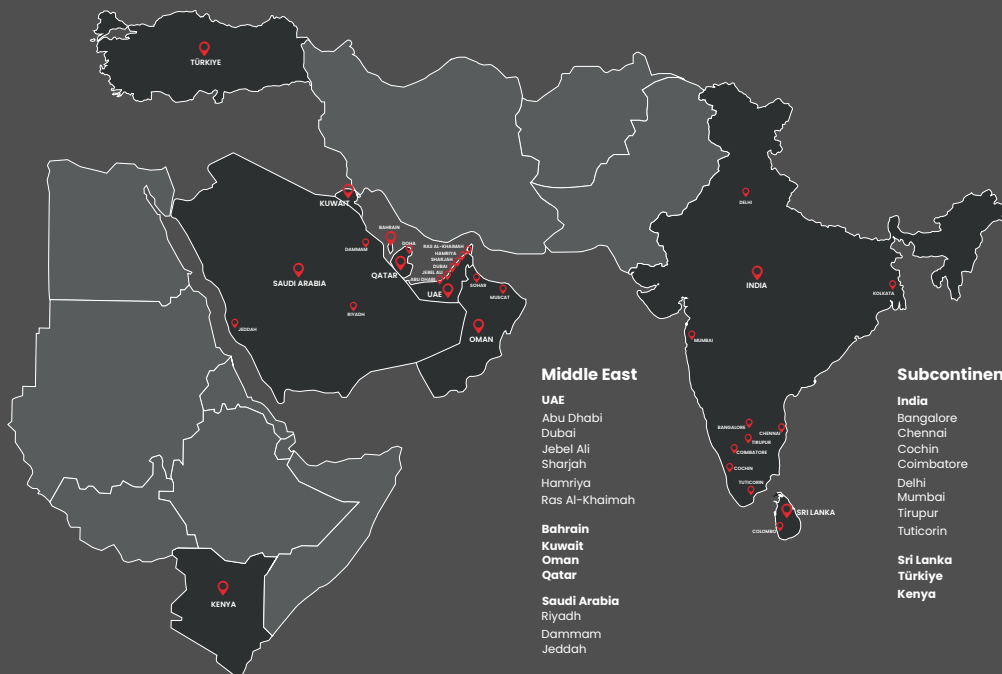
Contact Number : +91 11 40589921  
Email: info@cssglobalforwarding.com

**CSS Global Forwarding - Bangalore**

Contact Number : +91 9845011372  
Email: info@cssglobalforwarding.com

For a detailed contact list, please email [marketing@cssdubai.com](mailto:marketing@cssdubai.com)

## CSS GROUP'S GLOBAL PRESENCE





**Saudi Arabia**



# **LCL BONDED SERVICE**

## **JEDDAH TO DAMMAM**

**&**

## **DAMMAM TO JEDDAH**

 **+966 57 247 2518**  **pricing@cssksa.com**

 **www.cssgroupsite.com**

